

ASHBOURNE

A LEVEL COLLEGE KENSINGTON



CONTENTS

Ashbourne College	3	Oxbridge Programme	17
Principal	4	Location, Facilities and Accommodation	19
Results and University Destinations	5	Activities and Events	20
Personal Tutors	6	Extra-curricular Clubs	21
Individual Attention	7	A Level Subjects	23
Welfare	9	University Entrance	24
Mathematics and Sciences	10	Intensive A Level Courses	25
Humanities	11	GCSE Courses	26
Fine Art, Graphic Communication and Textile Design	12 - 13	Admissions Process	27
Drama and Music	14	Term Dates and Fees	28
Engineering Programme, EPQ and Medical School Programme	15	Accreditation	29
Finance Programme	16	Ashbourne Staff	30-31



Ashbourne is one of the best private A levels colleges in London and the UK. Our students consistently achieve outstanding exam results. In 2023, for example, 27% attained A* and 54% A*A. We are among the top 5% of independent schools in the country rated by Ofsted as Outstanding in all areas.

Ashbourne offers an exceptional level of individual attention which leads to impressive improvement in academic performance, putting Ashbourne in the top 5% of UK schools and colleges for 'value added'. Our students are extremely ambitious and almost 60% go on to study at world-class Russell Group universities including UCL, Imperial College, Oxford and Cambridge.

The college embraces a friendly, informal but disciplined approach to education, much like a university. Students are encouraged to become confident, independent learners with comprehensive support and guidance from Personal Tutors, individual attention in class, subject-specific clinics and peer group mentoring. Attendance and homework submission are strictly monitored as is performance in mock exams which take place each half term.

Ashbourne suits ambitious and hardworking students who will learn to take full responsibility for their success in education.



Principal

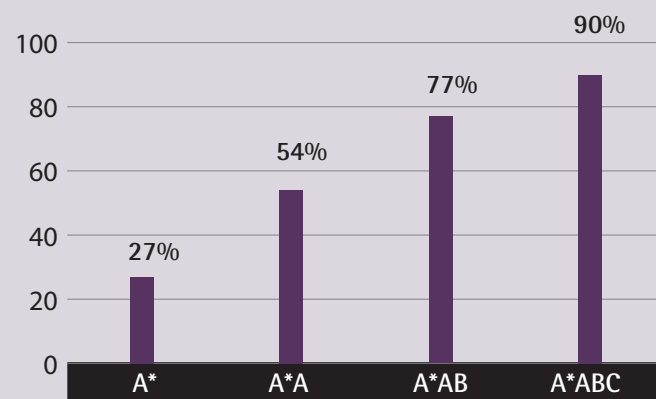
MICHAEL KIRBY

BASc Aerospace Engineering (Toronto), MSc Statistics (Birkbeck)

Mike founded Ashbourne College in 1981 and has since presided over its continuing academic development and success. Mike is a key figure in the promotion of independent education in the UK through organisations such as the Council for Independent Education (CIFE). He was formerly a lay member of the Admissions Panel for Medicine at UCL and is Head of Faculty for Mathematics and Physics, one of the most successful at Ashbourne. Mike studied Aerospace Engineering and Statistics at the Universities of Toronto and London.

Results and University Destinations

A level results 2022 – 2023



A level results for the previous 10 years:

A*A – 52%

A*AB – 77%

A*ABC – 92%

The list below shows the most popular destinations of our A level graduates. Almost 60% of our students have won a place at Russell Group universities.

Top University Destinations in the last 5 years

King's College London	51
University College London (UCL)	48
Queen Mary University	34
Manchester University	19
City University	19
Westminster University	18
Imperial College London	15
Warwick University	15
Bristol University	14
Cambridge University	13
University of the Arts London (UAL)	13
Leeds University	12
Royal Holloway University	12



Personal Tutors

Each A level student is assigned a Personal Tutor with whom they meet regularly to discuss academic performance and any pastoral issues. They review half-termly mock grades and work with each student to enhance their performance. Personal Tutors play a pivotal role in facilitating communication between parents, teachers and students. It is never necessary to wait for half-term reports or parents' evenings to get in touch.

Personal Tutors also spend as much time as necessary, including many one-to-one sessions, ensuring that each student in their care makes a confident and effective application to university (UCAS). This includes encouraging and supporting students to engage in appropriate reading, work experience, research and possibly an Extended Project Qualification (EPQ) to strengthen their application.

The most important role of the Personal Tutor is to motivate students to achieve their academic personal best; they are the lynch pin of our system of individual attention. Their principal responsibility is to support and encourage each of their students to become independent learners not only to achieve immediate academic success but also to set a stage for success at university and beyond.

Individual Attention

Ashbourne creates an ideal environment for students and teachers to engage and interact more effectively by maintaining small class sizes, typically 10 or fewer students. Individual attention at Ashbourne, however, extends far beyond the classroom. Outside of class students benefit from additional timetabled help from teachers, subject-specific clinics and advice from student mentors.

Our teachers not only encourage excellence from their students but have high expectations for themselves. Staff are encouraged and supported to appraise their performance and take up continuous professional development.

We work closely with students and parents through open communication and continual feedback to help our students attain their goals. We closely monitor attendance and completion of work and accept nothing less than total commitment. Parents and guardians may track performance and communicate any concerns directly to the Personal Tutor using the online parents' portal. The Personal Tutor will always intervene if performance fails to match potential.

Every half term our teachers issue a report on each of the students in their care. This includes comments on working and target grades, the quality and quantity of submitted work, the promptness of attendance and achievement in half-termly mock (practice) examinations.



Welfare

Student welfare is a priority at Ashbourne and a vital aspect of each student's education. Good academic results depend on appropriate support, which begins with a careful appraisal at admission. This ensures that each student is in company with others of similar ability, ambition and aptitude. Our Designated Safeguarding Lead (DSL) reviews each application to ensure that Ashbourne can provide the appropriate emotional, psychological and physical support for each and every student.

Ashbourne has a zero-tolerance policy for misbehaviour, such as racial and sexual abuse, bullying, homophobia, drug use and violence. Students may report any concerns, no matter how small, about their physical, emotional or psychological wellbeing to the DSL, their Personal Tutor or any member of staff. Staff are responsible for following up safeguarding reports to ensure that the concern has been dealt with satisfactorily.

All staff must train and retrain throughout the academic year to keep abreast of safeguarding legislation and guidance. The DSL is responsible for coordinating this training as well as overseeing our Personal Safety Health and Economic Education (PSHEE) programme in which all students of Years 10, 11 and 12 participate.





Mathematics and Sciences

Well over half of Ashbourne students study mathematics or the sciences, with great success. In 2023, for example, 60% attained A*A in Maths and 75% in Physics.

These outstanding results are a credit to both our aspirational and hardworking students and superb teaching team who take full advantage of the many support mechanisms we have in place to help students reach their potential. These include timetabled sessions with teachers outside class times, peer mentoring schemes and opportunities to engage in extracurricular activities that broaden students' subject knowledge and research beyond the syllabus.

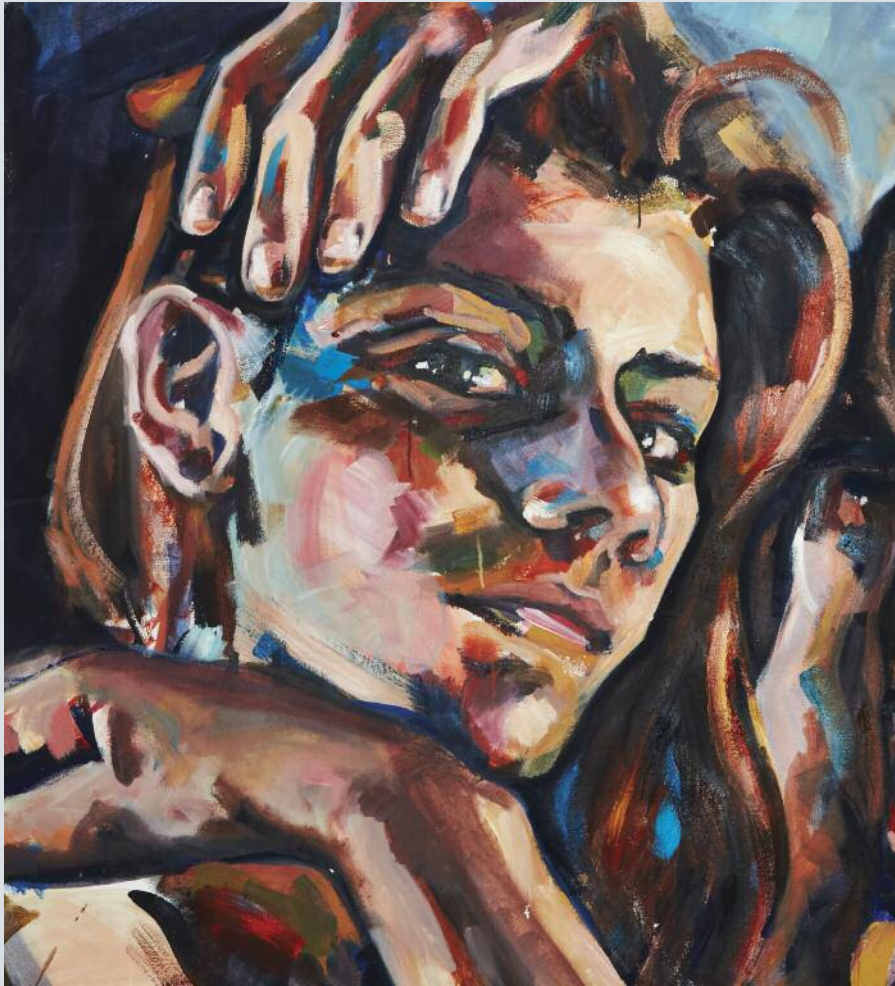
Our very ambitious and able students have won gold awards in the annual United Kingdom Mathematics Trust (UKMT) Senior Mathematics competition, with teams finishing in the top half of the national competition. We actively encourage our students to participate in the annual Mathematics and Physics Olympiads, in which they may study university level material, and to join our Astrophysics Club if they wish. Of course, our specialist programmes for Engineering, Finance and Medicine depend on our excellence in these subjects.

Humanities

Ashbourne is diverse in many ways. The broad curriculum and wide selection of A level subjects on offer, exemplified within the Humanities Faculty, reflect the different personalities, interests and ambitions of our students. Subjects offered within this faculty extend from English Literature and History through Economics to Philosophy and Psychology. The quality of Ashbourne's Humanities Faculty is also evident from the number of students winning places each year at Oxbridge or Russell Group universities to read subjects such as English Literature and Classics.

Ashbourne also offers A level courses in modern European languages such as French and Spanish as well as Arabic, Chinese, Italian, Japanese, Persian, Portuguese, Russian and Turkish for native speakers. International students are encouraged to take their native language at A level, alongside their other chosen subjects to maximise the strength of their UCAS application.





Fine Art



Graphic Communication

Fine Art, Graphic Communication and Textile Design

Perhaps more than any other subject, individual attention plays a most important role in art and design. The opportunity to engage with a teacher one to one does wonders for students' confidence. They not only master new techniques but also develop the courage to use their imagination to develop their own personal style and expression. This is reflected in the outstanding results. In 2023, for example, all of our A level Textiles students attained A*A.

The Arts Faculty offers expert guidance and comprehensive support for students applying for a wide range of art and design degree courses at university, such as Fine Art, Architecture, Graphic Design and Visual Effects, Fashion Design, Communication as well as Fashion Promotion. Students take part in group critiques to analyse and develop their work, join portfolio preparation workshops and receive one-to-one support during the university application process, including completing university task briefs and interview practice. They are also invited to additional workshops, open to all students, to explore a wide range of art and design areas such as silk screen printing, life drawing classes, digital design and fashion.

Ashbourne's superb London location is ideal for students to visit some of the world's finest art and design galleries, exhibitions, museums and events. This broadens their understanding and appreciation of art and design and helps them to contextualise and bring depth to their own work. Students are also offered outstanding opportunities to showcase their talents and artwork both at the college and further afield, as part of their professional development.



Textile Design



Drama and Music

Ashbourne's Drama and Music students develop the academic, technical and creative skills to pursue a career in these fields, as well as to achieve the high results required by top UK universities. Students receive well-balanced tuition in theory and practice, combining academic rigour with the practical and creative demands of the courses.

Drama students receive personal direction, encouragement and expert guidance from their teachers in small classes. Music students can take advantage of the dedicated music facilities to practise, compose and record using Mac computers and industry-standard software. Students also get the chance to see a great selection of world-class theatre productions and live performances.

Auditions and Scholarships

Ashbourne offers scholarships to gifted and talented students. Candidates are invited to perform their monologue or piece of music at auditions, which they then discuss with the panel at interview.

Ashbourne Revue and Creative Arts Event

Ashbourne offers fantastic opportunities for students to write, perform and direct in a wide variety of events to gain experience, showcase their talents and have fun. The Ashbourne Revue, which involves a large number of the student body, and the Creative Arts Event are true highlights in the college calendar.

Engineering Programme (AEP)

Ashbourne's specialist university programmes offer structured support and guidance to students applying for particularly competitive and demanding university courses. The Engineering Programme prepares students to make compelling and competitive UCAS applications to a wide range of engineering degree courses.

Extended Project Qualification (EPQ)

Ashbourne invites students applying for highly sought after and demanding degree courses to complete an EPQ. This formally assessed independent research project allows students to demonstrate their aptitude for personal intellectual development, academic research and writing necessary for undergraduate study and gives them a competitive advantage in their application. Ashbourne provides the specialist academic supervision and guidance required to complete projects to a very high standard.

Medical School Programme (AMSP)

Ashbourne's Medical School Programme has been helping prospective doctors, dentists and all students interested in medical-related courses for more than 30 years. Students are given support with their personal statements and interviews, as well as preparation for the UCAT required by various medical schools. A successful medical application involves a wide range of extra-curricular activity and the Programme guides students towards relevant work experience. Finally, they are given essential insights and information through the seminars and talks from medical professionals and past students.

The Programme is led by Amy Youngman, Faculty Head of Natural Sciences and Head of Sixth Form. Amy has a degree in Neuroscience from King's College London and direct experience interviewing Medical School applicants at UCL.



Finance Programme (AFP)

Ashbourne Finance Programme students will deepen their understanding of global economic issues and current affairs through regular group seminars, events, workshops and trips. We take advantage of London's status as a financial hub and make field trips to Canary Wharf and the City, visiting the home of leading financial institutions. Students are offered valuable insights by professionals from the financial world, helping to shape their own career ambitions.

Students following the Programme are set real-life investment challenges where they have to put A level economic theories to the test. Students gain excellent experience in research, analysis and trading as well as the opportunity to practise their communication skills by pitching to a live panel.

As part of the Programme, each student receives individual, expert guidance in their UCAS application including choosing the right university degree course for them and any interview practice required.

Oxbridge Programme (AOP)

The Oxbridge Programme provides students with a clear structure and comprehensive support for making a strong application to Oxford or Cambridge universities.

Applicants to Oxford and Cambridge need to achieve outstanding A level results but there are many other ways in which they must show suitability for these prestigious and demanding universities. The Programme covers all aspects of the Oxbridge application process, supporting students so that they can make a sensible choice of college and engage in appropriate super-curricular activities before the formal application process begins.

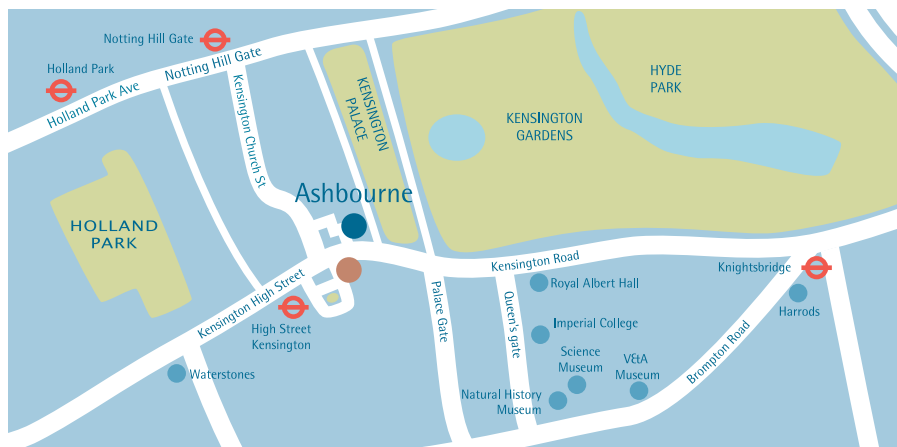
Participants complete a 5000-word Extended Project Qualification (EPQ), which helps to demonstrate their intellectual curiosity and ambition. They must also write a distinctive and pertinent personal statement. As well as supporting students in these tasks, the Programme prepares them for the pre-interview assessment tests and interviews.

The advice and support that Ashbourne offers its students has led to excellent results, with the University of Cambridge being one of our most popular university destinations in recent years.

The Programme is led by Will Stockland, who studied at the University of Oxford and has many years' experience helping students on their journey to places at Oxford or Cambridge.







- Ashbourne College main building
- Young Street premises

Location, Facilities and Accommodation

Ashbourne is superbly located nearby Kensington Palace and Hyde Park. It benefits from this beautiful setting as well as the close proximity to such cultural icons as the Royal Albert Hall and the Victoria and Albert Museum.

Ashbourne has two premises within easy walking distance of each other situated at Old Court Place and Young Street, where GCSE students and the Art Faculty are located. The college is fully equipped for all A level subjects, modern science laboratories, music practice space, multimedia recording and editing facilities for film, creative publishing, graphic design and computer animation and the latest audio-visual equipment in each classroom for online distance learning provision. We also provide wireless internet access throughout the college as well as an extensive range of onsite learning resources.

Ashbourne has no dedicated accommodation and is not a boarding school. However, we do maintain a list of suppliers who have provided excellent accommodation and guardianship for our students over many years.

Types of Accommodation

Nearby are several hostels where students from Ashbourne and other colleges reside. Students may also choose to stay with a host family where they can study whilst experiencing life as part of an English family. The college has about 50 students who live in these types of accommodation, with almost equal numbers in hostels and homestays.

Suppliers of Accommodation and Guardianship

Parents, students or guardians may use our list to arrange accommodation but must deal directly with these suppliers or make their own arrangements. Ashbourne does not inspect the accommodation offered by the providers and does not make any claim or guarantee as to the standard or safety of the premises listed. Nonetheless, we receive very few complaints about these providers and generally feedback has been positive.



Activities and Events

Cultural Visit to Europe

Every year, students are offered the chance to visit a major European city during the February half-term. It is a great opportunity to experience the outstanding cultural heritage of art, architecture, music and theatre in cities such as Barcelona, Paris, Rome and Vienna, amongst others.

Special Events

- Art Gallery Trips
- Board Games Night
- Bowling
- Creative Arts Event
- Drama Trips
- Go Karting
- Laser Tag
- Opera/Musical Theatre Tour
- Revue
- Sports Day
- Sushi/Pizza-Making Night



Extra-curricular Clubs

Extra-curricular activities have always been integral to life at Ashbourne, providing a platform for the varied talents and interests of the college's vibrant student body. They offer great opportunities for students to engage, make friends and have fun. In recent years, the activities programme has been expanded to feature numerous clubs, trips and social events.

A capella singing	Italian
Afrobeats dance	Jazz dance
Arabic	KPOP dance
Ashbourne Allstars football	Model United Nations
Bollywood dance	Reading
Chess	Russian
Chinese	Salsa
Climbing/Bouldering	T'ai Chi and Qigong
Creative writing	Turkish
Fitness	UKMT Maths Olympiad
French	





RUSSIAN SNOWS
LYDIA MAKAROVA

A Level Subjects

Arabic*

Biology

Chemistry

Chinese*

Classical Civilisation

Computer Science

Drama & Theatre Studies

Economics

English Literature

Film Studies

Fine Art

French

Further Mathematics

Graphic Communication

History

History of Art

Italian*

Japanese*

Mathematics

Music

Persian*

Philosophy

Physics

Politics

Portuguese*

Psychology

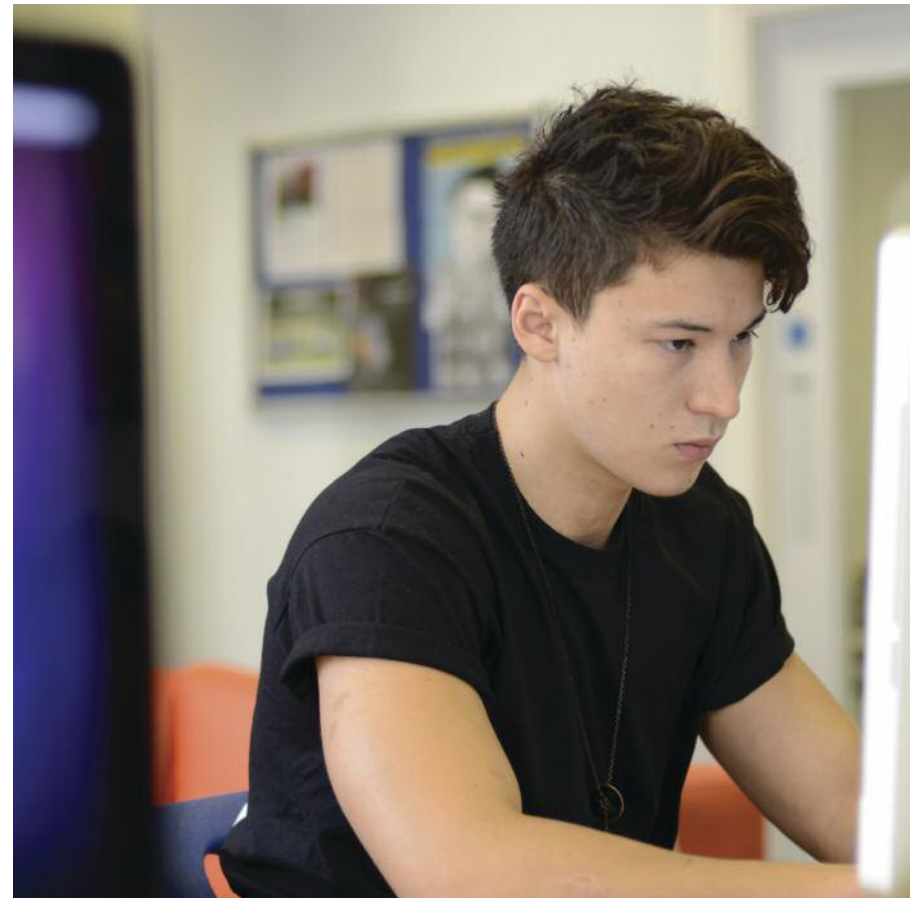
Russian*

Spanish

Textile Design

Turkish*

** Please consult with Admissions*





University Entrance

Helping each student to make a confident application to university is one of the strengths of our UCAS Tutor system. Each student is designated a UCAS Tutor to oversee and provide feedback on all elements of the UCAS application process. This not only means completing the student reference and assisting with personal statements, but also giving suggestions on appropriate work experience, academic short courses and identifying the perfect destination and course for each student's personal needs and ambitions.

With the number of applications to UK universities increasing each year, applicants benefit from a distinctive, unique application.

Almost 60% of our students go on to study at top UK universities, including Cambridge, Imperial College and UCL.

Intensive A Level Courses

Ashbourne has been delivering highly successful intensive A level courses for more than 40 years. They are ideal for students committed to working hard and taking advantage of the individual support and guidance we offer to help them get the grades they want.

These intensive A level courses include one-year and retake courses, courses commencing in January and transfers from Year 12 to Year 13. Students on these courses consistently achieve excellent exam results with nearly 60% resulting in A*A, rising to 80% on occasion.

The courses are structured so students can complete the entire syllabus in a relaxed and confident manner with plenty of time for revision. This is possible because our class sizes are small and we allocate far more teaching time than is typical. For example, for certain subjects such as Maths, Sciences and Economics students receive around 50% more lesson time than is usual.

Our students also sit mock exams, based on previous exam papers, each half term followed by constructive feedback. The college places great emphasis on teaching exam technique which is considered critical to achieving the best A level results.

We believe that building students' confidence is essential to their success and our Personal Tutors play an important role in mentoring, motivating and monitoring. This includes as much one to one time as necessary to produce the most compelling and effective application to university (UCAS).

Ashbourne consistently ranks within the top 5% of schools and colleges for 'value added' and almost 60% of our graduates go on to Russell Group universities.

GCSE Courses

Ashbourne's flexible GCSE courses allow students to create their own learning pathway that aligns with their interests and abilities. Students may enrol from Year 10 or Year 11 and are expected to continue at the college for their A level studies. All GCSE subjects are taught over one year and every student is required to take compulsory core subjects. Students joining in Year 10, for example, typically take core subjects in Year 10, optional subjects in Year 11 then commence with their A levels. Very able students may also have the opportunity to start A level courses early in Year 11. Most recently, 69% of our GCSE students who continued to A level achieved A*A, compared to the college average of 54% for A levels.

The informal but disciplined approach to learning helps build positive relationships between teachers and students, which is what attracts many of our students. Lessons are structured with a strong exam focus so students are thoroughly prepared for the move to A level. Our Personal, Social, Health and Economic Education (PSHEE) course that runs alongside their GCSEs helps students develop valuable life skills, make sound A level and career choices and become independent and self-reliant learners.

GCSE core (compulsory) subjects: Mathematics, Double Science, English Language, English Literature, PSHEE and Sports.

Optional subjects*: Art & Design, Computer Science, Drama, Economics, French, History, Music and Spanish.

* Please contact Admissions as subject availability may vary.

Admissions Process

Ashbourne wants all of its students to meet their academic potential. To ensure that the college is the right choice we interview and assess each student.

Before being invited for an interview, we ask applicants to write a personal statement of not more than 500 words. This includes subject choices, ambitions, achievements and interests. Applicants also need to submit a copy of the most recent school reports, their passport and a copy of any other relevant supporting documents (e.g., any special provisions or medical considerations).

We may ask for additional assessments depending on the subjects applied for. For example, art students will need to submit artwork, music students a theory test and an audition.



Term Dates 2024 / 25

Autumn Term

First day of term
Monday 9th September 2024

Half-term
Monday 28th October to
Friday 1st November 2024

End of term
Friday 20th December 2024

Spring Term

First day of term for returning students
Monday 6th January 2025

Half-term
Monday 17th February to
Friday 21st February 2025

End of term
Friday 28th March 2025

Easter Revision

Week 1
Monday 31st March 2025

Week 2
Monday 7th April 2025

Week 3
Monday 14th April 2025

Summer Term

First day of term
Tuesday 22nd April 2025
(21st April 2025 – Easter Monday)

*There is no half-term or study leave,
except for Bank Holidays*

End of term
Friday 30th May 2025

Fees 2024 / 25

A Level / GCSE Courses

Home students per term	£11,500
------------------------	---------

International students per term	£12,500
---------------------------------	---------

Additional fees

Registration fee	£300
------------------	------

A level exams fees per subject	£250
--------------------------------	------

GCSE exams fees per subject	£125
-----------------------------	------

Refundable book deposit	£250
-------------------------	------

Individual tuition per hour	£100
-----------------------------	------

Practical fees per subject, per term
*(for A level students of Fine Art, Graphics,
Music, Textiles, Drama and Sciences)* £250

Accreditation

Ashbourne achieved an outstanding Ofsted report at its most recent inspection (December 2021). Outstanding in all categories: overall effectiveness, quality of education, behaviour and attitudes, personal development, leadership and management and sixth-form provision.

Ashbourne was also one of the first private colleges to achieve Sponsor status from the government body UKVI (United Kingdom Visa Immigration).



ASHBOURNE STAFF

Principal

Head of Mathematics and Physics Faculty

Michael Kirby

BASc Aerospace Engineering (Toronto), MSc Statistics (Birkbeck)
Further Mathematics

Director of Studies

Head of Sixth Form

Head of Middle School

Lee Kirby

SEND Coordinator, Deputy Safeguarding Lead, Personal Tutor

Assistant Director of Studies Leader of Faculties

Head of Humanities Faculty

James Wykes

BA English (Wales), MA Modern Literature in English (Birkbeck), PGCE (King's College)
English Literature

Head of Sixth Form

Careers Lead

Sean Pillai

MA Civil Engineering with Business Management (Warwick), QTS
Mathematics, Personal Tutor

Head of Sixth Form

Head of Natural Sciences Faculty

Medical School Lead

Amy Youngman

BSc Neuroscience (King's College), QTS
Biology, Personal Tutor

Designated Safeguarding Lead

Frances Burns

BA History and Drama (Liverpool), MA Drama (Ohio)

Head of Multi-Media and Social Science Faculty

Dennis Fulcher

BSc Sociology (Kingston), MA Politics and Government (London Met), PGCE (Greenwich)
Film Studies, Politics

Head of Languages Faculty

Alberto Lado Rey

BA English Language (Santiago de Compostela), MA Hispanic Studies (UCL), Certificate of Pedagogy (Santiago de Compostela)
Film Studies, Spanish

Head of Culture and Society Faculty

Oxbridge Lead

Will Stockland

MA History of Art (Edinburgh)
History of Art

Benvinda Alves

BA English, MA English (Paris Nanterre), QTS
French

Philip Arnold

BSc Biological Sciences (Warwick), MSc Climate Change Science and Policy (Bristol)
Biology, Personal Tutor

Snaa Ashraf

BA English Language (Kent), MA English in Education (King's College), PGCE (Canterbury)
English Literature

Cristina Bottigella

BA Italian Literature and Contemporary Art (Milan), MA Cultural Policy and Management (City)
Italian

Joanna Budden

BA History (Leeds), PGCE (Manchester Met)
History

Brendan Casey

BSc Economics (LSE), BEd (Greenwich)
Economics

George Chaldezos

BA Philosophy (Thessaloniki), PhD Classical Civilisation (Cambridge), PGCE (IOE)
Classical Civilisation

Nicholas Cheeseman

MA Fine Art (Chelsea College of Arts), QTS
Fine Art

Irwin Chin

BEng Electrical Engineering (Imperial), QTS
Computer Science

Richard Clark

MA Mathematics (Bath), PGCE (Oxford), QTS
Mathematics

Lydia Edwards

BA Economics (Coventry), QTS
Economics

Anastasia Eleftheriou

BEng Computing (Imperial), PhD Philosophy (Southampton)
Computer Science, Personal Tutor

Alexander Goodwin

BSc Medical Science, PGDip Education (Birmingham)
Chemistry, Natural Sciences Lead

Graceme Wishanka Gregory

BSc Psychology (Missouri), PGDip Education (Open University of Sri Lanka)
Psychology

Danielle Grover

BA English Literature (Southampton), MA English Literature (Warwick), PhD Philosophy (Southampton), PGCE (Durham), QTS
English Literature

Zeinab Hendawi

BA English Literature (Aleppo), MEd Teaching Arabic to Speakers of Other Languages (Universal American)
Arabic

Luke Hogan

BSc Pure and Applied Mathematics, PGCE (Sheffield), NPQH (Lancaster)
Mathematics

Jak Sritraipop

BA Applied Art (Silapakorn, Thailand)
Graphic Communication

Susana Leon De Torres

BA Philology, Certificate of Pedagogy (Seville)
Spanish

Caterina Lewis

BA Fine Art, MA Fine Art (Central Saint Martin's), PGCE Art and Design (IOE), QTS
Fine Art

Gabriella Li

BSc Mathematical Sciences (Durham)
Mathematics

Lauren Moorley

MA English: Issues in Modern Culture (UCL), PGCE (IOE)
English Language, English Literature

Chella Nathan

BEng Electronic and Communications Engineering (North London), BSc Physics, Pure Mathematics and Statistics (Jaffna), MSc Mathematics (Open University), PGCE (Greenwich) *Mathematics, Further Mathematics, Physics*

Bruce Ng

BA Economics (Wisconsin), PGDip Education (Chinese University of Hong Kong) *Economics, Finance Lead*

Nayan Patel

BSc Biological Sciences (Bangor), PGCE Biology (Oxford), QTS *Biology*

Virash Patel

BSc Chemistry, PhD Chemistry (North London) *Chemistry*

Michael Peat

BA Divinity (UCL), BSc Physics (Birmingham) *Philosophy*

Katie Pettitt

BA History of Art and English (Birmingham), MA Contemporary Art, Theory & Criticism (Essex), PGCE (UEL) *History of Art, English Literature, Personal Tutor*

Abigail Pillai

BA English (UCL), PGCE Secondary English (UCL), QTS *English Literature*

Leona Potter

BSc Psychology (Leeds), PGCE (Canterbury Christ Church), QTS *Psychology*

Josh Ray

MSc Chemistry (Imperial) *Mathematics*

Wesley Rykalski

BA History, MA Medieval Studies (UCL) *History*

Samson Sahmland-Bowling

BSc Mechanical Engineering (Leeds) *Engineering Lead*

Imran Shah

BSc Physics (Imperial) *Mathematics, Physics*

Chunzi Song

BA Business Communication (Middlesex), MSc International Management (Roehampton) *Chinese*

Dominic Sorrell

BSc Theoretical Physics (University of Edinburgh) *Physics*

Sarah Thompson

BA Human Sciences (Oxford), MSc Neuroscience (UCL), QTS *Psychology*

Christopher Todd

BSc Chemistry (East Anglia), PGCE (Roehampton) *Chemistry*

Sakae Ueno

Diploma in Floral Art & Design (NAFAS), Japanese Language Teachers Training Course (Japanese Education Teachers Society), Japanese Teachers Training (Asahi Culture Center) *Japanese*

Kateryna Varyukhina

CELTA (British Study Centres); MA French as Foreign Language (Rouen), Teaching Diploma in English and French (Kiev Linguistic) *Russian*

Jo-Lee Weyer-Henderson

BA Drama & Theatre Studies, PGCE (Stellenbosch) *Drama, Personal Tutor*

Michael Wilkinson

BA Politics (SOAS), MSc Politics and Sociology (Birkbeck) *Politics*

Yat-Soon Yeo

BA Music, MA Historical Musicology (King's College), PGCE Harpsichord and Conducting (Guildhall), PGCE Secondary Music (IOE) *Music*

Mark Youngman

BSc Biochemistry (Southampton) *Biology, Science*

Admissions, Finance and Marketing**Nicola Brownless**

BA Fine Art (Loughborough); Dip Art & Design (City and Guilds) *Relations Officer*

Suzanna Liu

BA French and German (King's College) *Finance, Visas and Deputy Head of Admissions*

Marcus Loudon Bermúdez

BA English and American Literature and Spanish (Kent) *Deputy Head of Admissions and Administration*

Anh Nguyen

BA Graphic Design: New Media (UCA) *Deputy Head of Admissions*

Facilities**Fabio Carpena**

Facilities & IT Manager

Jerome Carasco

Facilities Assistant

Administration**Zivile Buineviciute**

College Administrator

Christelle Buo Dagher

College Administrator

George Danilenko

College Administrator

Michaela Dimova

College Administrator

Sharan Kandola-Singh

Senior College Administrator and Attendance Officer

Gianna Mathew

College Administrator

Hien Nguyen

Head of Administration

Navid Noori

College Administrator

Margaret Rennie

College Administrator

Simone Shaw

Nominated Safeguarding Director and SEND Assessor

Aida Sincheva

Compliance and Exams Assistant

Catherine Tang

Careers and Events Officer

Sean Yip

Compliance and Timetable Officer

Zilan Zhou

College Administrator & Easter Revision Coordinator

ASHBOURNE

A LEVEL COLLEGE KENSINGTON



17 Old Court Place, Kensington, London W8 4PL

+44 (0)20 7937 3858

ashbournecollege.co.uk